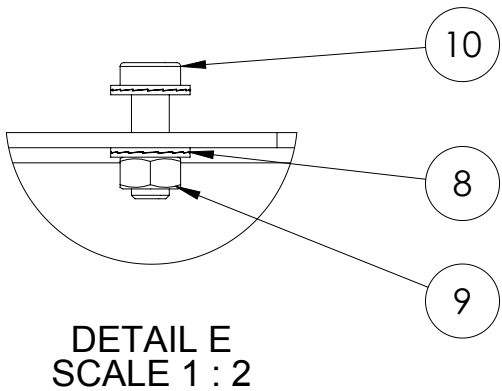


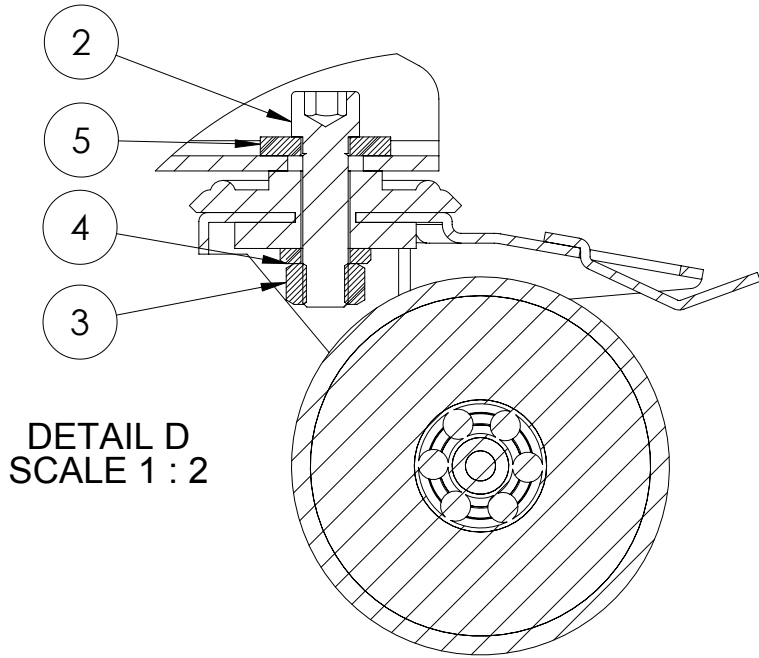
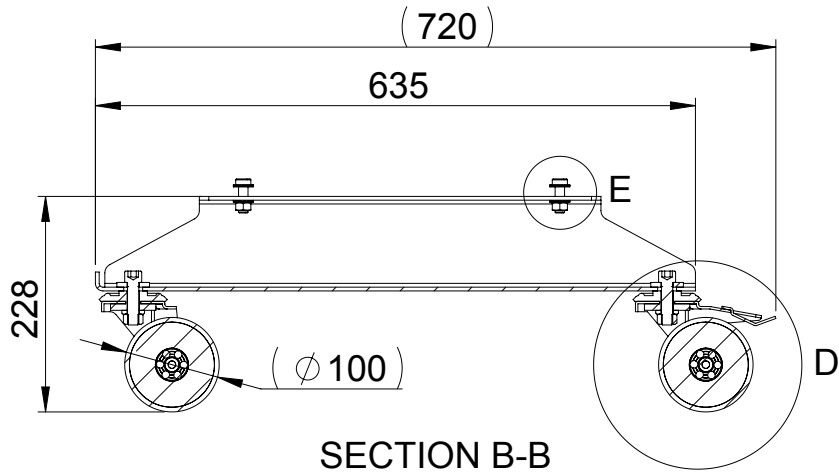
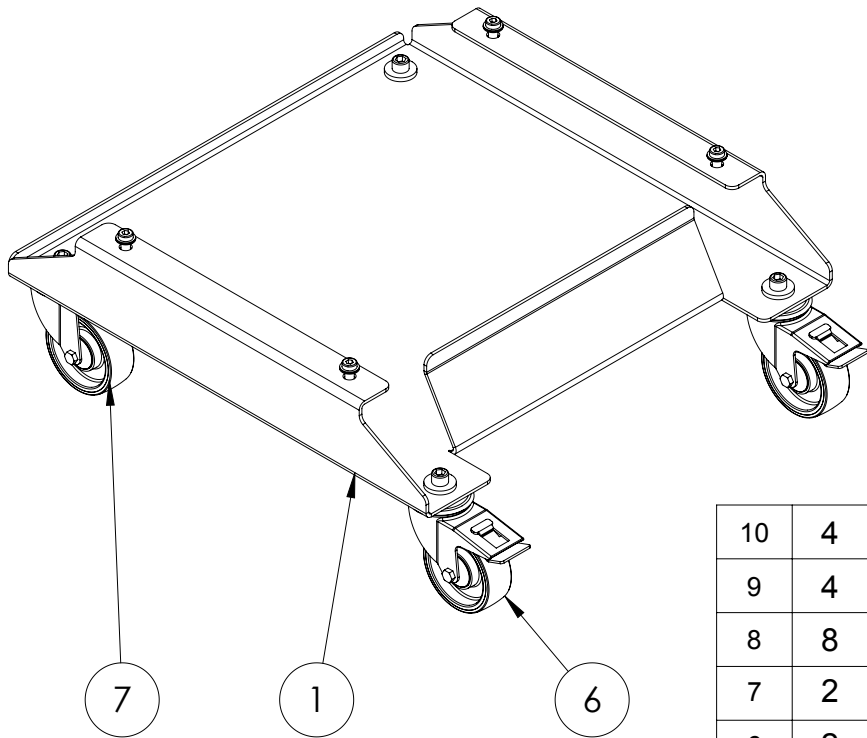
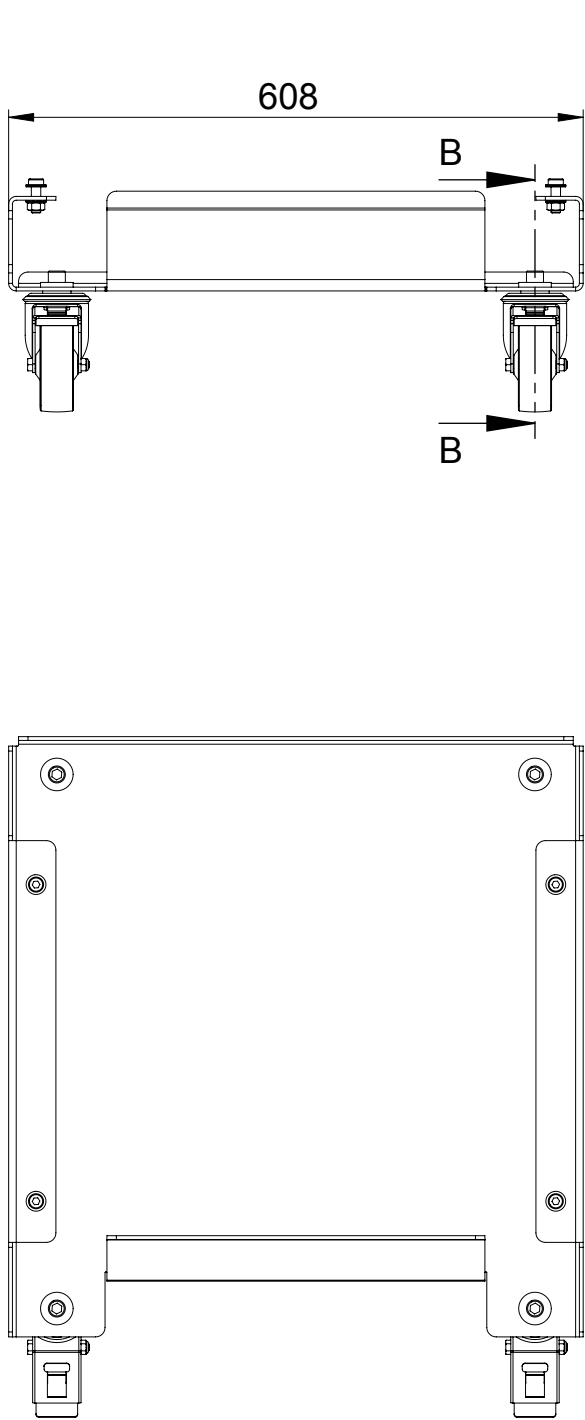
Den här ritning är YASKAWA NORDIC ABs egendom och skyddad enligt gällande lag samt får ej utan vårt medgivande kopieras, delgivas annan eller obehörigen användas.

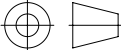
YASKAWA NORDIC AB

These documents must not be copied without YASKAWA NORDIC ABs written permission and contents thereof must not be imparted to a third party nor be used for any unauthorized purpose. Contravention will be prosecuted.



NOTE:
Parts 9,8 and 10 added seperatly.
Used to attach spacer to YRC1000 cabinet.



10	4	Screw - MLC6S		6002928	M10x30 8.8 FZB	
9	4	Nut - M6M		6021017	M10 8.8 FZB	
8	8	Washer	Nord-lock	6029411	NL10SP 10,7x21x2,5	
7	2	Wheel	Hjulex	6072014	Ø100x35 K1 PU 150Kg	
6	2	Wheel	Hjulex	6072013	Ø100x35 K1 PU 150Kg Brake	
5	4	Washer		6028006	M12 (hårdad)	
4	4	Washer - TBRB		6025004	M12	
3	4	Nut - M6M		6021018	M12 8.8 FZB	
2	4	Screw - MC6S		6002091	M12x45 12.9 Obeh	
1	1	Cabinet plate		146977-100	YRC1000	
Pos.no.	QTY.	Title	Vendor	Article number Drawing number	Description Remark	
		Spacer cabinet with wheel				YRC1000
Smoothness <input checked="" type="checkbox"/>		Where nothing else is indicated	Customer			Project number
General tolerances Dim. SS-ISO 2768-1 m Weld. SS-ISO 5817 Hole H14		 A3	Project			
Hole c-c < Ø 10 ± 0,3 Hole c-c > Ø 10 ± 0,5			Parent Name			Design FAS Date 2017-10-31
			Parent PartNo			Draft FAS Date 2017-10-31
YASKAWA			Replaces	Sheet 1 / 1	Appr. MM Date 2017-10-31	
			Replaced by	Scale 1:8	Drawing number 137802-104	
			State	Revision		

Weight:24.9

YASKAWA